

# JBP Nanoneedles

## The New Device for Injection

Ultra-thin walled needle with wide inner diameter



# The Characteristics of the new treatment device as JBP Nanoneedle

With outstanding Japanese Nano technology...

- Ultra-thin walled needle with wide inner diameter
- Micron Polishing Technology(Micron Sharpness)
- Feel the minimal tissue damage



- **Less pain & less swelling**
- **Almost no bleeding(by 34G)**
- **Invisible injection marks**
- **Suitable for high density solutions.**

# Primacy of new device JBP Nanoneedle over old needle

Gauge Length	JBP Nanoneedle		Old Needle	
	Outer Diameter	Inner Diameter	Outer Diameter	Inner Diameter
34G-8/4mm	<b>0.20 mm</b>	<b>0.10 mm</b>	- *	-
33G-13/4mm	<b>0.26 mm</b>	<b>0.16 mm</b>	0.26 mm	0.10 mm
30G-13/4mm	<b>0.30 mm</b>	<b>0.20 mm</b>	0.30 mm	0.15 mm

\*Sometimes old needle with 0.26mm OD and 0.10mm ID is sold as “32G”.

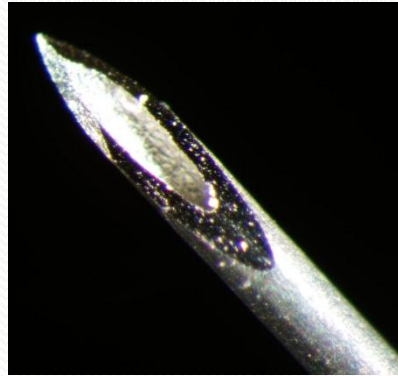
- Inner Diameter of JBP Nanoneedle 30G is almost same as old 27G(0.20mm)
- Inner Diameter of JBP Nanoneedle 33G is almost same as old 30G(0.16mm)
- Inner Diameter of JBP Nanoneedle 34G is almost same as old 33G(0.10mm)
- JBP Nanoneedle 34G is the world’s first extra fine ultra-thin walled needle approved by KFDA, U.S.FDA and CE Marking.

ID (mm)	JBP	OLD
0.2	<b>30G</b>	27G
0.16	<b>33G</b>	30G
0.10	<b>34G</b>	33G

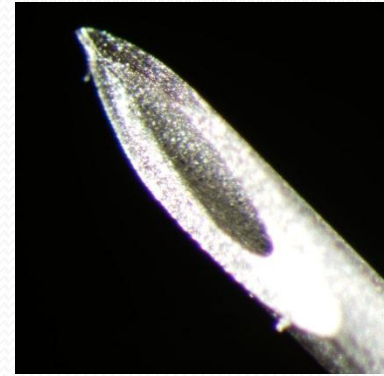
# Micrographs of JBP Nanoneedle against old needle (200x)



JBP Nanoneedle 30G



Old 30G



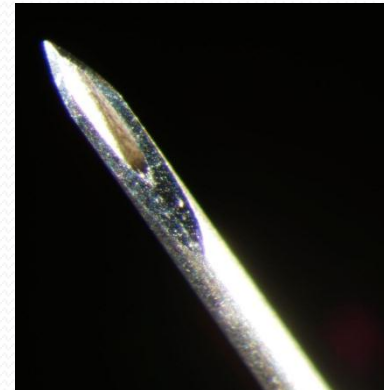
Old 27G



JBP Nanoneedle 33G



Old 33G



JBP Nanoneedle 34G

**A sharp contrast between JBP Nanoneedle and Old one**

# Recommended JBP Nanoneedle's compatibility with dermal fillers 1

Item	Manufacturer	Dermal Fillers	JBP Nanoneedle30G (13mm) OD:0.3mm / ID:0.2mm	JBP Nanoneedle33G(13mm) OD: 0.26mm / ID: 0.16mm	JBP Nanoneedle 34G (8mm) OD: 0.2mm / ID: 0.1mm	
hyaluronic acid	Q-Med	Restylane	v.suitable	not suitable	not suitable	
		Restylane subQ	not suitable( available with wider inner 27G and 25G)			
		Restylane Touch	suitable	v.suitable	not suitable	
		Restylane Vital	suitable	suitable	v.suitable	
	Allergan	Juvederm Ultra	suitable	v.suitable	not suitable	
		Juvederm Ultra Plus	v.suitable	not suitable	not suitable	
		Juvederm Ultra 2	suitable	v.suitable	not suitable	
		Juvederm Ultra 3	suitable	v.suitable	not suitable	
		Juvederm Ultra 4	v.suitable	not suitable	not suitable	
		Juvederm 18	suitable	suitable	v.suitable	
		Juvederm 30	v.suitable	not suitable	not suitable	
	Anteis	Esthelis Basic	suitable	v.suitable	not suitable	
		Esthelis Soft	suitable	suitable	v.suitable	
		Fortelis Extra	mediocre	not suitable	not suitable	
	TEOXANE	TEOSYAL First Lines	suitable	suitable	v.suitable	
		TEOSYAL Global Action	suitable	v.suitable	not suitable	
		TEOSYAL Deep Lines	v.suitable	not suitable	not suitable	
	Bio Science	Hyacorp Lips	suitable	suitable	v.suitable	
		Hyacorp Face	v.suitable	not suitable	not suitable	
	Allergan	Surgiderm 18	suitable	suitable	v.suitable	
		Surgiderm 30 XP	v.suitable	not suitable	not suitable	
		Surgilift Plus	suitable	v.suitable	not suitable	
	Mentor	Puragen	not suitable( available with wider inner 27G and 25G)			
		Prevelle silk	v.suitable	not suitable	not suitable	
		Captique	v.suitable	not suitable	not suitable	
	Fidia Farmaceutici	IAL-System ACP	suitable	suitable	v.suitable	
	VITAL ESTHETIQUE	HYALURONICA Soft	suitable	suitable	v.suitable	
		HYALURONICA Style	suitable	v.suitable	not suitable	
		HYALURONICA Ultra	v.suitable	not suitable	not suitable	
	Acon Pharmaceuticals	idune 2.0%	suitable	suitable	v.suitable	

# Recommended JBP Nanoneedle's compatibility with dermal fillers 2

Item	Manufacturer	Dermal Fillers	JBP Nanoneedle30G (13mm) OD:0.3mm / ID:0.2mm	JBP Nanoneedle33G(13mm) OD: 0.26mm / ID: 0.16mm	JBP Nanoneedle 34G (8mm) OD: 0.2mm / ID: 0.1mm
collagen	Allergan	ZYDERM 1	suitable	suitable	v.suitable
		ZYDERM 2	suitable	v.suitable	not suitable
		ZYPLAST	v.suitable	not suitable	not suitable
	Allergan	COSMOPLAST	v.suitable	not suitable	not suitable
		Cosmoderm1	suitable	suitable	v.suitable
		Cosmoderm2	suitable	v.suitable	not suitable
	KOKEN	Athelocollagen 1%	suitable	suitable	v.suitable
		Athelocollagen 2%	suitable	suitable	v.suitable
		Athelocollagen 3%	suitable	v.suitable	suitable
		Athelocollagen 6.5%	v.suitable	suitable	not suitable
COLBAR	EVOLENCE	mediocre	not suitable	not suitable	
	EVOLENCE Breeze	v.suitable	suitable	not suitable	
Botulinum toxin	Allergan	Botox Vista	suitable	suitable	v.suitable
	Merz Pharma	Xeomin	suitable	suitable	v.suitable
Other	Merz Pharma	RADIESSE	mediocre	not suitable	not suitable

# Appropriate Treatments

- Collagen injection
- Hyaluronic acid injection
- Botulinum toxin injection
- Mesotherapy (suitable with 4mm length)
- Placenta injection
- Vaccine injection
- Local anesthesia-sensitive point
- IM injection of Placental extract (suitable with 13mm length)

# Results of treatment with JBP Nanoneedle against old needle

Case 1 :

Comparison of botulinum toxin injection into the forehead



**Soon after JBP Nanoneedle 34G**



**Soon after old needle 30G**



# Results of treatment with JBP Nanoneedle against old needle

Case 2 :

Comparison of Atelocollagen 2% injection into the lower eyelids



**Soon after JBP Nanoneedle 34G**



**Soon after old needle 30G**

# Results of treatment with JBP Nanoneedle against old needle

Case 3:

Comparison of Atelocollagen 6.5% injection into the wrinkles on the nasolabial folds and the corners of the mouth



Soon after JBP Nanoneedle 33G



Soon after old needle 30G

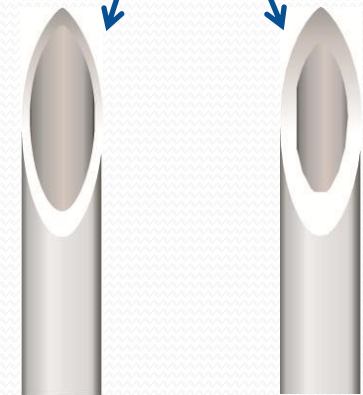
# The main characteristic of JBP Nanoneedle is...

- Ultra-thin walled needle with wide inner diameter
- Its broad inner cavity helps inject with little resistance



With this structure, JBP Nanoneedle may be felt “Delicate” and “Flexible” compared to Old Needle.

The biggest difference between the two with the thinness



JBP Nanoneedle

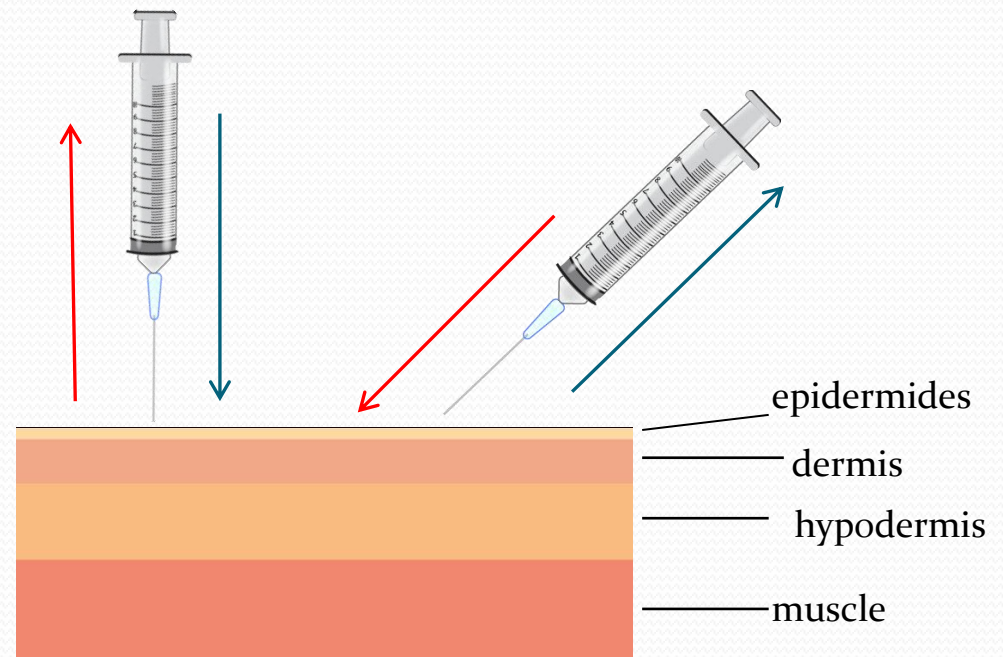
Old Needle

## For more effective usage...

- Be careful to inject **slowly** and **straight** in the same angle.
- For intramuscular injection, Inject into the skin **vertically**

[Intramuscular Injection]

[Hypodermic Injection]



**CAUTION:** Too quick movement to insert leads to “bend” or “break” of JBP Nanoneedle potentially. Because the needle is a bit flexible .

## JBP Nanoneedle makes it possible to...

- Reduce the “Down Time” for injection treatments
- Minimize psychological and physiological stress of patients
- Result in greater patients satisfaction with treatments
- Increase the number of repeat patients



This “New Medical Device” makes dramatic difference  
with your treatment **REVOLUTIONARILY**